

# WARRANTY CARD

Manufactured by :  
**PLANET POWER TOOLS PVT. LTD.**  
Building No. A-10, Gala No. 24/25/26, Padmini Complex,  
Purna Village, Bhiwandi - 421302 Maharashtra.

Name of Purchaser .....

Address .....

.....

Product ..... **WOOD CUTTER** ..... Model No ..... **EC 4R** Planet Power

Sl. No..... Date of Purchase .....

Invoice No..... Armature No .....

Dealers Stamp \_\_\_\_\_

Signature \_\_\_\_\_



**EC 4R** Planet Power  
**110 MM WOOD CUTTER**  
**INDUSTRIAL**

## HANDLING INSTRUCTIONS



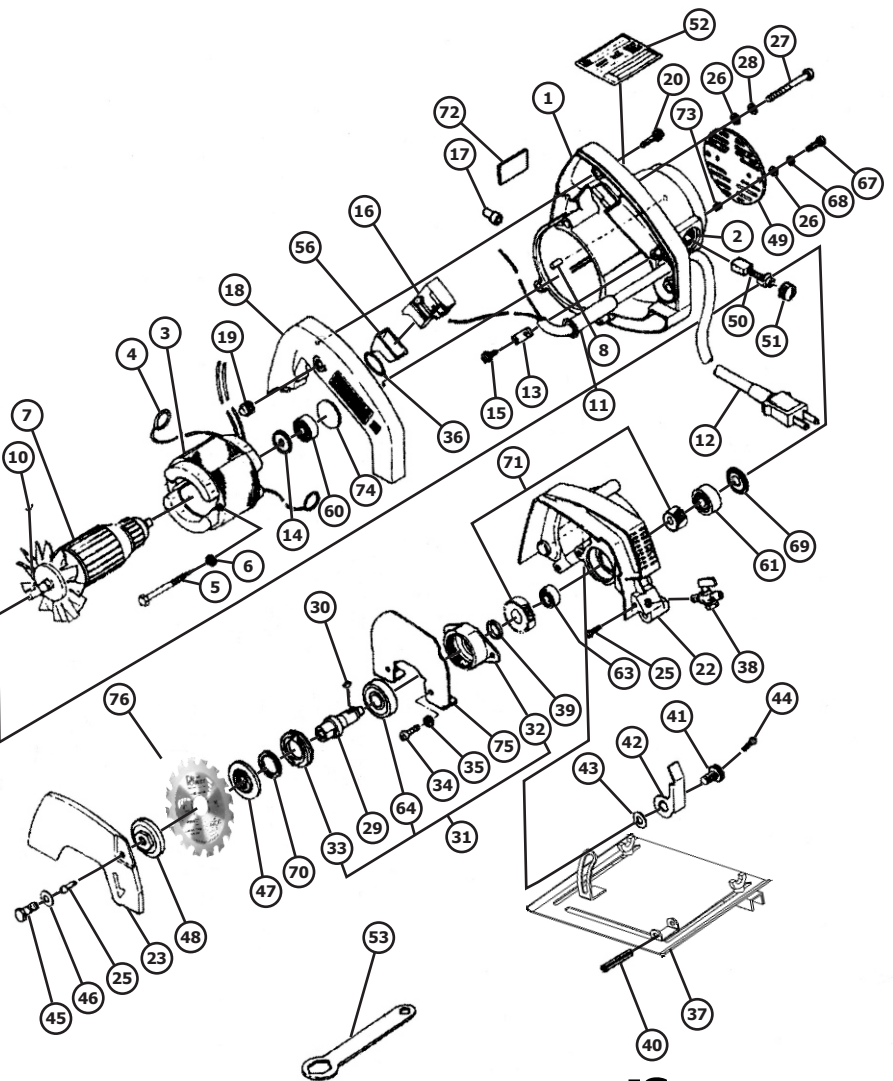
**India's Leading Power Tool Brand**

Read, Understand Carefully & Follow These Instructions While Operating Tool.

Manufactured by :  
**PLANET POWER TOOLS PVT. LTD.**  
Building No. A-10, Gala No. 24/25/26, Padmini Complex,  
Purna Village, Bhiwandi - 421302 Maharashtra.

**Planet Power**  
*Global Expertise. Local Care*

**EC 4R** Planet Power



**Planet Power**

## WARRANTY

# CONGRATULATIONS; YOU ARE NOW A PROUD MEMBER OF THE PLANET POWER PARIVAR

All the tools manufactured by Planet Power Tools Pvt. Ltd undergo a series of rigorous inspection procedures ensuring that you only get a world class power tool.

All Products manufactured by Planet Power Tools Pvt. Ltd. are covered by an international warranty valid for six (6) months from the date of purchase. This comprehensive warranty® covers the parts as well as any defects arising out of faulty manufacturing of the tool.

®The Warranty **DOES NOT** apply to:

- Components subject to normal wear and tear e.g. Carbon Brushes, Brush holders, plug and cord assembly, drill chucks batteries, flanges etc.
- Unless expressly stated; any and all attachments supplied with the tool.
- Unauthorised repairs, alterations and modifications.
- Damage caused due to dust, slurry, and any foreign objects as well as due to improper use or an accident
- Damage due to voltage fluctuations

### III. CHECK / ENSURE

- a) Power switch is in OFF position, prior to operation.
- b) The motor winding does not become damaged / wet with oil or water.
- c) **Regularly inspect all mounting screws and ensure they are properly tightened.**
- d) Alignment of moving parts.
- e) Binding of moving parts.
- f) Breakage of mountings.
- g) **The carbon brush wear limit.**

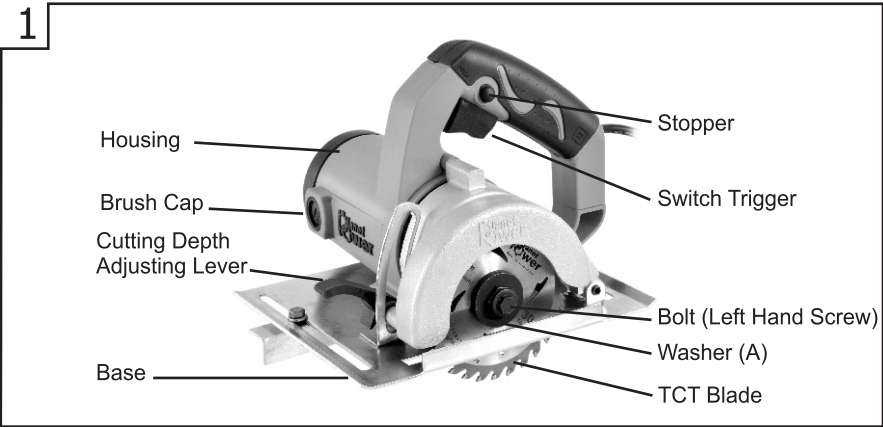
### SAFETY INSTRUCTION

1. **Never carry tool by cord.**
2. Power tools should be stored in cool and dry area.
3. Inspect tool cords/ extension cords periodically.
4. **Start cutting operation when full speed has been reached.**
5. **The maximum cutting depth should be held to 20mm for one cut.**
6. Do not touch movable parts or accessories, unless the Power source has been disconnected.
7. Follow instructions for lubricating and changing accessories.
8. **Remove adjusting keys, wrenches before turning it ON.**
9. Always take care in preventing the power cord from coming in contact with revolving TCT blade.
10. Keep children away, during operation.

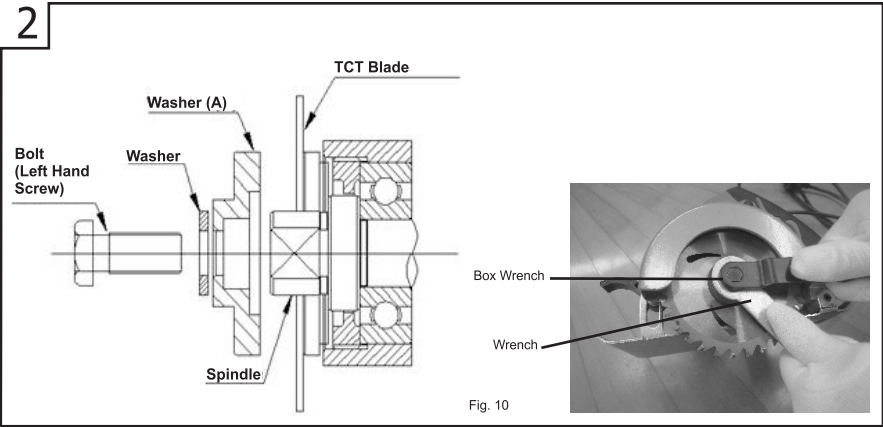
### PART LIST

ITEM NO.	DESCRIPTION	ITEM NO.	DESCRIPTION
1	Hosing	39	Distance Collar
2	Brush Holder	40	Roll Pin
3	Stator	41	Left Hand Hex Bolt M8x15
4	Brush Terminal	42	Lever
5	Hex Hd Tapping Screw D5x60	43	Washer
6	Washer	44	Machine Screw M4x8
7	Armature	45	Left Hand Hex Bolt M7x15
8	Bearing Lock	46	Washer
10	Woodruf Key 2.5x8	47	Washer B
11	Cord Armor	48	Washer A
12	Cord	49	Tail Cover
13	Cord Clip	50	Carbon Brush
14	Dust Washer	51	Brush Cap
15	Tapping Screw D4x10	52	Name Plate
16	Switch	53	Wrench
17	Connector	56	Rubber Cover A
18	Handle Cover	60	Ball Bearing (608 zzc2)
19	Rubber Cover B	61	Ball Bearing (629 wc2)
20	Tapping Screw D4x20	63	Ball Bearing (626 zzc2)
22	Gear Cover	64	Ball Bearing (6201 wc2)
23	Cutter Cover	67	Machine Screw M5x14
25	Machine Screw M4x14	68	Spring Lock Washer
26	Washer	69	Dust Seal B
27	Machine Screw M5x50	70	X Ring
28	Spring Lock Washer	71	Gear & Pinion Assy
29	Spindle	72	Seal Packing
30	Woodruf Key 3x10	73	Hex Sc Hd Set Screw M5x6
31	Bearing Holder Assy	74	Bearing Seal
32	Bearing Holder	75	Cover
33	Bearing Cap	76	TCT Blade
34	Machine Screw M4x20		
35	Spring Lock Washer		
36	O Ring		
37	Big Base		
38	Peacock		

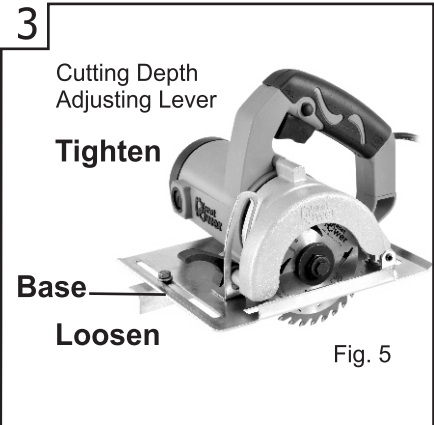
1



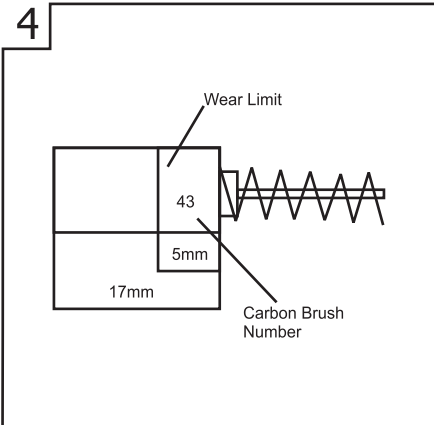
2



3



4



4

**Technical Data**

Power Input	1350 W
No-Load Speed	8500 rpm
Voltage	230V~
TCT Blade	110 mm
Weight	2.8Kg

**APPLICATIONS**

Cutting of wood panels & boards.

**GENERAL OPERATIONAL PRECAUTIONS**

**I. DON'T USE / EXPOSE**

- a) In presence of flammable liquids or gases.
- b) For cutting of metallic materials.
- c) To the rain.
- d) In damp or wet locations.
- e) If switch does not turn it ON and OFF.
- f) Cutting along curves.
- h) Solvents such as Thinner, Gasoline, Benzene, Alcohol, ammonia etc. for wiping / cleaning the plastic parts or accessories.

**II. USE**

- a) Proper voltage power source, according to the specification.
- b) Extension cords which are intended for outdoors, during outdoor use.
- c) Clamps or vise to hold work.
- d) Safety glasses.
- e) Protective hair covering.
- f) Wear rubber hand gloves.
- g) Wear Non – Skid rubber footwear.
- h) Only Planet Power TCT Blades.

**STANDARD ACCESSORIES**

- 1. Wrench 2



5